



PRECISION[®]

Pipes & Fittings

ELECTRICAL WIRING SYSTEMS

2016-17



“

WE
DO

DIFFICULT
THINGS

IMMEDIATELY **IMPOSSIBLE**
TAKES
A LITTLE
LONGER.

”

Sunil P. Kadakia

WHAT'S INSIDE

- 06 **COMPANY PROFILE**
- 08 **ROUND CONDUIT & FITTINGS**
- 26 **CORRUGATED FLEXIBLE CONDUIT & FITTINGS**
- 32 **MINI-MAXI TRUNKING & FITTINGS**
- 42 **PANEL TRUNKING**
- 50 **TECHNICAL INFORMATION**





Company Profile

With three decades behind us, today we manage to channelise a great deal of experience, innovation and performance with the indispensable products offered at Precision Plastic Industries Pvt.Ltd. Pioneers of this business, we have come a long way in gathering the trust and preferences of the customers, worldwide.

Since its interception in 1978, Precision has conformed to changing customer perceptions by adapting and serving the market with products that have been channelising 'lifestyles' among other things. Customers should feel the 'need' and it is our job to create that 'need' before they even realise it, and thus be ahead of time, always. This insight has driven us to new levels of customer satisfaction and new spaces in the market share.

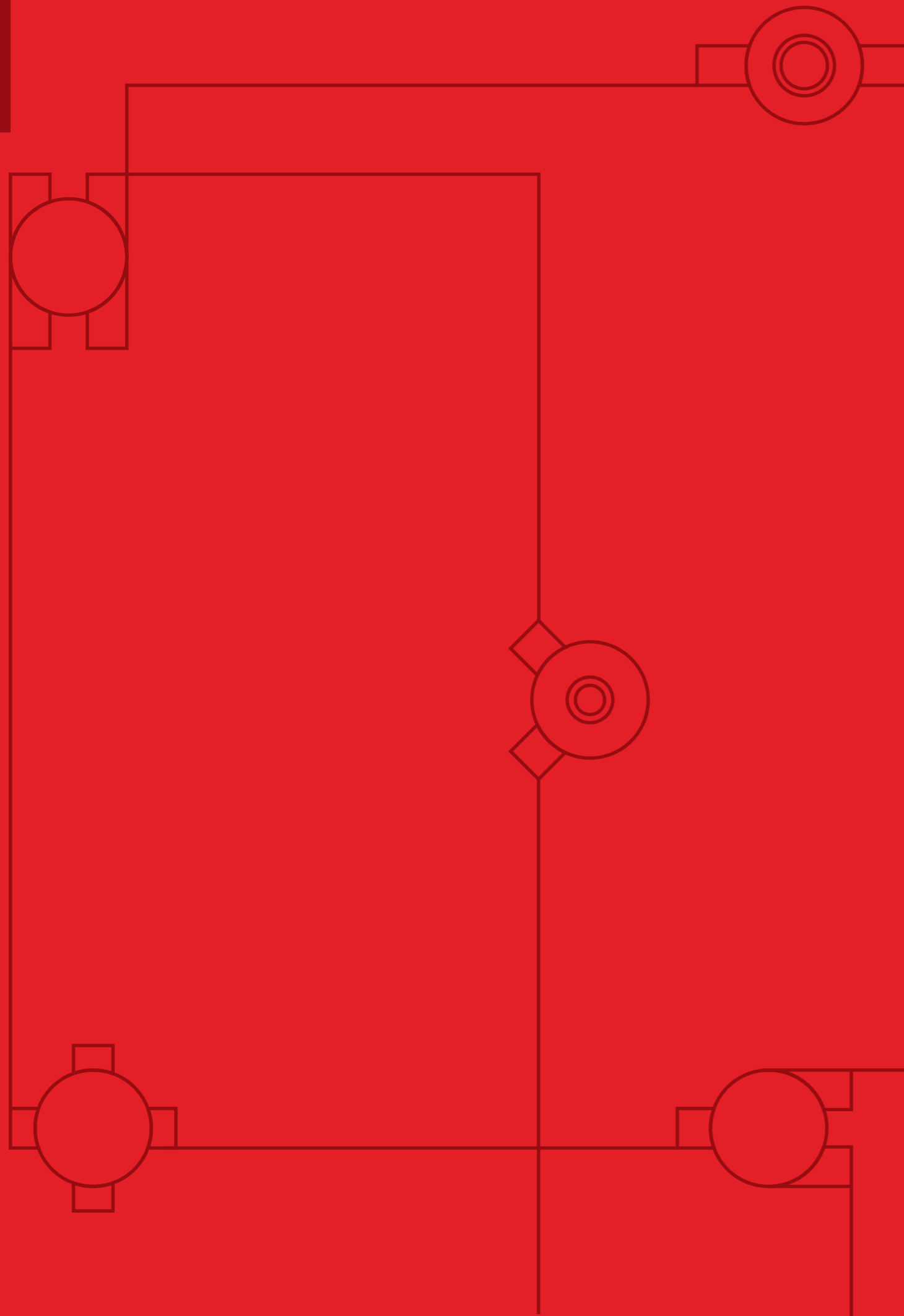
Economies transformed as we expended domestic and international operations rapidly. Currently, Precision predominantly prevails in the market, thus making it the leader of its own course.

Excellence comes not with achievement, but in this case through consistency. A consent keenness to upgrade and expand our product range and a proactive stance with respect to growing market demand for quality, ergonomics, safety and aesthetics, gives us an edge. Precision lives up to its name by delivering ace customer services and also supreme product quality.

This excellence is just not limited to a nationwide distribution network, but also an international distribution network that channelises our products and services across the globe, delivering Precision to the Middle East, African counties, European markets and many Asian nations.

Our National and International standards remain unmatched, assured by our ISO:9001, ISO:14001, ISO:18001 certificate and our headship in the industry, unconquered.

Kunal Sunil Kadakia



ROUND CONDUIT AND FITTINGS

Precision Round Conduit PVC Pipes & Fittings are manufactured from a specially formulated unplasticised polyvinyl chloride (UPVC) to meet the most stringent Indian and international standards. Our products are made of Extra Super High Impact materials which make them safe to use in harsh environments. The products are manufactured in accordance with **IS: 9537 Part 3**, **BS: EN61386 – 1 : 2008** for UPVC conduits, **IS: 3419** and **BS: 4607** for UPVC fittings.

Applications

Channelising concealed and surface wiring.
Telecommunication & Cable ducting.

Features

Various diameters and grades.
Light, medium & heavy mechanical stress, to suit various applications & site conditions.
Easy & fast installation.
Wide range of component maximises application.
Durable & impact resistant.
Fire retardant.
Corrosion free.
Thermal resistant from -5°C TO $+60^{\circ}\text{C}$. Precision circular boxes & adaptable boxes are provided with M4 brass insert with a load suspension capacity of 3 Kgs at 60°C .

Colour

Black, Grey, Ivory & White. Other colours are available on a made-to-order basis.



ROUND CONDUIT PIPES

LMS (LIGHT MECHANICAL STRESS)

SR NO	PRODUCT CODE	SIZE OD(mm)	STANDARD PACK
01	PRC 16L	16	100X3m
02	PRC 19L #	19	100X3m
03	PRC 20L	20	100X3m
04	PRC 25L	25	100X3m
05	PRC 32L	32	50X3m
06	PRC 40L	40	25X3m
07	PRC 50L	50	20X3m
08	PRC 63L	63	18X3m

MMS (MEDIUM MECHANICAL STRESS)

SR NO	PRODUCT CODE	SIZE OD(mm)	STANDARD PACK
09	PRC 16M	16	100X3m
10	PRC 19M #	19	100X3m
11	PRC 20M	20	100X3m
12	PRC 25M	25	100X3m
13	PRC 32M	32	50X3m
14	PRC 40M	40	25X3m
15	PRC 50M	50	20X3m

HMS (HEAVY MECHANICAL STRESS)

SR NO	PRODUCT CODE	SIZE OD(mm)	STANDARD PACK
16	PRC 16H	16	100X3m
17	PRC 19H #	19	100X3m
18	PRC 20H	20	100X3m
19	PRC 25H	25	50X3m
20	PRC 32H	32	50X3m
21	PRC 40H	40	25X3m
22	PRC 50H	50	20X3m

MMS (*L.H.S.F.T. CONDUIT)

SR NO	PRODUCT CODE	SIZE OD(mm)	STANDARD PACK
23	PSFT 16M	16	100X3m
24	PSFT 20M	20	100X3m
25	PSFT 25M	25	100X3m
26	PSFT 32M	32	50X3m
27	PSFT 40M	40	25X3m
28	PSFT 50M	50	20X3m

HMS (*L.H.S.F.T. CONDUIT)

29	PSFT 16H	16	100X3m
30	PSFT 20H	20	100X3m
31	PSFT 25H	25	50X3m
32	PSFT 32H	32	50X3m
33	PSFT 40H	40	25X3m
34	PSFT 50H	50	20X3m





CIRCULAR BOX TERMINAL (1 WAY)

CIRCULAR BOX ANGLE (2 WAY)

CIRCULAR BOX INTERSECTION (4 WAY)

DEEP CIRCULAR BOX TERMINAL (1 WAY)

SR NO	PRODUCT CODE	SIZE OD(mm)	STANDARD PACK
35	PRCB 201	20	20
36	PRCB 251	25	15

SR NO	PRODUCT CODE	SIZE OD(mm)	STANDARD PACK
37	PRCB 202A	20	20
38	PRCB 252A	25	15

SR NO	PRODUCT CODE	SIZE OD(mm)	STANDARD PACK
43	PRCB 204	20	20
44	PRCB 254	25	15

SR NO	PRODUCT CODE	SIZE OD(mm)	STANDARD PACK
45	PRCB 201D	20	10
46	PRCB 251D	25	10
47	PRCB 321D	32	10



CIRCULAR BOX THROUGH (2 WAY)

CIRCULAR BOX - TEE (3 WAY)

DEEP CIRCULAR BOX THROUGH (2 WAY)

DEEP CIRCULAR BOX ANGLE (2 WAY)

SR NO	PRODUCT CODE	SIZE OD(mm)	STANDARD PACK
39	PRCB 202S	20	20
40	PRCB 252S	25	15

SR NO	PRODUCT CODE	SIZE OD(mm)	STANDARD PACK
41	PRCB 203	20	20
42	PRCB 253	25	15

SR NO	PRODUCT CODE	SIZE OD(mm)	STANDARD PACK
48	PRCB 202SD	20	10
49	PRCB 252SD	25	10
50	PRCB 322SD	32	10

SR NO	PRODUCT CODE	SIZE OD(mm)	STANDARD PACK
51	PRCB 202AD	20	10
52	PRCB 252AD	25	10
53	PRCB 322AD	32	10



DEEP CIRCULAR BOX TEE (3 WAY)

SR NO	PRODUCT CODE	SIZE OD(mm)	STANDARD PACK
54	PRCB 203D	20	10
55	PRCB 253D	25	10
56	PRCB 323D	32	10

DEEP CIRCULAR BOX INTERSECTION (4 WAY)

SR NO	PRODUCT CODE	SIZE OD(mm)	STANDARD PACK
57	PRCB 204D	20	10
58	PRCB 254D	25	10
59	PRCB 324D	32	10

CIRCULAR BOX BRANCH - 4 WAY (H)

SR NO	PRODUCT CODE	SIZE OD(mm)	STANDARD PACK
64	PRCB 20H	20	15
65	PRCB 25H	25	15

CIRCULAR BOX BACK OUTLET (1 WAY)

SR NO	PRODUCT CODE	SIZE OD(mm)	STANDARD PACK
66	PRCB 201 BO	20	20
67	PRCB 251 BO	25	15



CIRCULAR BOX BRANCH - 2 WAY (U)

SR NO	PRODUCT CODE	SIZE OD(mm)	STANDARD PACK
60	PRCB 20U	20	20
61	PRCB 25U	25	20

CIRCULAR BOX BRANCH - 3 WAY (Y)

SR NO	PRODUCT CODE	SIZE OD(mm)	STANDARD PACK
62	PRCB 20Y	20	20
63	PRCB 25Y	25	15

CIRCULAR BOX BACK OUTLET THROUGH (2 WAY)

SR NO	PRODUCT CODE	SIZE OD(mm)	STANDARD PACK
68	PRCB 202S BO	20	20
69	PRCB 252S BO	25	15

CIRCULAR BOX BACK OUTLET ANGLE (2 WAY)

SR NO	PRODUCT CODE	SIZE OD(mm)	STANDARD PACK
70	PRCB 202A BO	20	20
71	PRCB 252A BO	25	15



**CIRCULAR BOX
BACK OUTLET TEE (3 WAY)**

SR NO	PRODUCT CODE	SIZE OD(mm)	STANDARD PACK
72	PRCB 203 BO	20	20
73	PRCB 253 BO	25	15

CIRCULAR LID

SR NO	PRODUCT CODE	SIZE OD(mm)	STANDARD PACK
74	PRCL	65 (standard)	100
75	PRCL 1	85	100
76	PRCL S	90	100
77	PRCL SL	110	50

LOOP IN BOX EXTENSION

SR NO	PRODUCT CODE	SIZE OD(mm)	STANDARD PACK
81	PRLB 20E	20	24

FAN BOX

SR NO	PRODUCT CODE	SIZE OD(mm)	STANDARD PACK
82	PRFB20	20 STD	10
83	PRFB25	25 STD	10
84	PRFB20SL	20 Large	10
85	PRFB25SL	25 Large	10
86	PRFBRD	20/25 With Rod	01



CIRCULAR EXTENTION RING

SR NO	PRODUCT CODE	SIZE OD(mm)	STANDARD PACK
78	PRER 20	20	50
79	PRER 25	25	40

LOOP IN BOX

SR NO	PRODUCT CODE	SIZE OD(mm)	STANDARD PACK
80	PRLB 20	20	20

COUPLER

SR NO	PRODUCT CODE	SIZE OD(mm)	STANDARD PACK
87	PCR 20 L	20	150
88	PCR 20	20	100
89	PCR 25	25	100
90	PCR 32	32	60
91	PCR 40	40	30
92	PCR 50	50	20

EXPANSION COUPLER

SR NO	PRODUCT CODE	SIZE OD(mm)	STANDARD PACK
93	PCR 20E	20	80
94	PCR 25E	25	50
95	PCR 32E	32	30
96	PCR 40E	40	15
97	PCR 50E	50	10



REDUCER

SR NO	PRODUCT CODE	SIZE OD(mm)	STANDARD PACK
98	PRR 1	25>20	250



SLIP TYPE BEND

SR NO	PRODUCT CODE	SIZE OD(mm)	STANDARD PACK
99	PRBN 16	16	75
100	PRBN 20	20	65
101	PRBN 25	25	35
102	PRBN 32	32	20
103	PRBN 40	40	10
104	PRBN 50	50	5
105	PRBN 63	63	1



ROUND 'U' CLIP

SR NO	PRODUCT CODE	SIZE OD(mm)	STANDARD PACK
117	PRUC 20	20	200



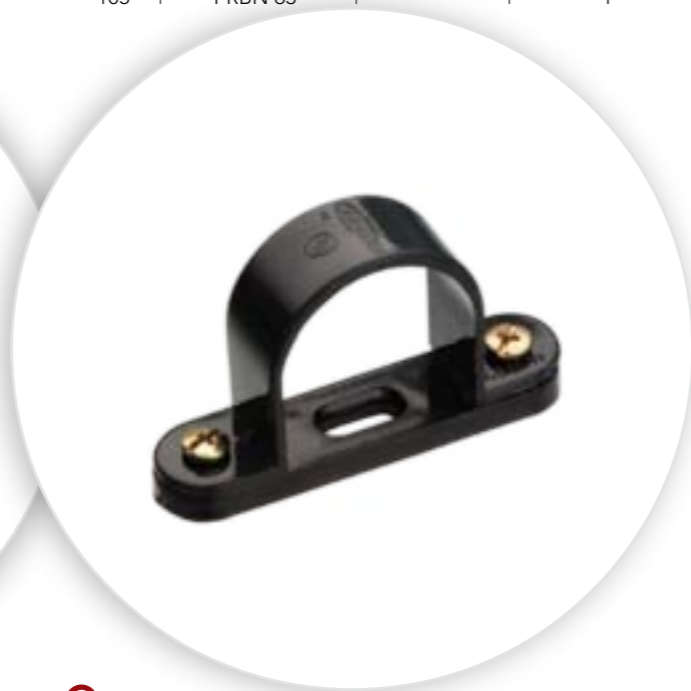
MALE BUSH ADAPTOR

SR NO	PRODUCT CODE	SIZE OD(mm)	STANDARD PACK
118	PMBA 20	20	200
119	PMBA 25	25	150



SLIP TYPE LONG BEND

SR NO	PRODUCT CODE	SIZE OD(mm)	STANDARD PACK
106	PRBL 20	20	45
107	PRBL 25	25	20
108	PRBL 32	32	10
109	PRBL 40	40	01
110	PRBL 50	50	01



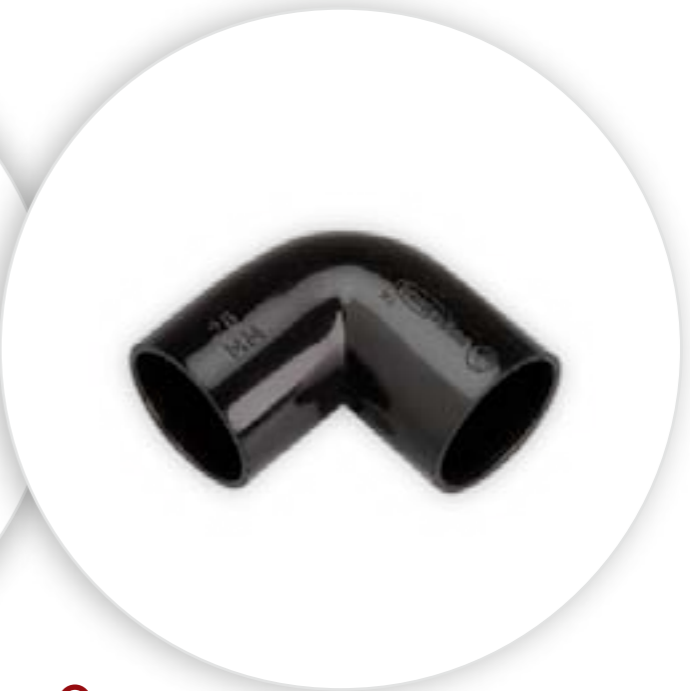
SPACE BAR SADDLE

SR NO	PRODUCT CODE	SIZE OD(mm)	STANDARD PACK
111	PRBS 20	20	100
112	PRBS 25	25	100
113	PRBS 32	32	100
114	PRBS 40	40	80
115	PRBS 50	50	60
116	PRBS 63	63	50



FEMALE BUSH ADAPTOR

SR NO	PRODUCT CODE	SIZE OD(mm)	STANDARD PACK
120	PFBA 20	20	100
121	PFBA 25	25	100
122	PFBA 32	32	75
123	PFBA 40	40	50
124	PFBA 50	50	25



ROUND ELBOW

SR NO	PRODUCT CODE	SIZE OD(mm)	STANDARD PACK
125	PRE 20	20	125
126	PRE 25	25	75



ROUND TEE

SR NO	PRODUCT CODE	SIZE OD(mm)	STANDARD PACK
127	PRT 20	20	50
128	PRT 25	25	50



INSPECTION ELBOW

SR NO	PRODUCT CODE	SIZE OD(mm)	STANDARD PACK
129	PIE 20	20	20
130	PIE 25	25	20



ADAPTABLE BOX WITH LID

SR NO	PRODUCT CODE	SIZE OD(mm)	STANDARD PACK
135	PAB 75L	3"x 3"x 2" 75X75X50	10
136	PAB 110L	4"x 4"x 3" 110X110X75	01
137	PAB 160L	6"x 4"x 3" 160X110X75	01
138	PAB 160SL	6"x 6"x 3" 160X160X75	01
139	PAB 225SL	9"x 9"x 3" 225X225X75	01
140	PAB 300SL	12"x 12"x 4" 300X300X110	01



SURFACE SWITCH BOX (Round Knockout)

SR NO	PRODUCT CODE	SIZE OD(mm)	STANDARD PACK
141	PSB 1	3"x 3"	10
142	PSB 2	6"x 3"	10



INSPECTION TEE

SR NO	PRODUCT CODE	SIZE OD(mm)	STANDARD PACK
131	PIT 20	20	20
132	PIT 25	25	20



INSPECTION BEND

SR NO	PRODUCT CODE	SIZE OD(mm)	STANDARD PACK
133	PIB 20	20	20
134	PIB 25	25	20



SWITCH BOX LID

SR NO	PRODUCT CODE	SIZE OD(mm)	STANDARD PACK
143	PSBL1 LID	3"x 3"	50
144	PSBL2 LID	6"x 3"	25



FLUSH MOUNTED - SWITCH BOX

SR NO	PRODUCT CODE	SIZE OD(mm)	STANDARD PACK
145	PFSB 1	3"x 3"x 2.5"	10
146	PFSB 2	6"x 3"x 2.5"	10



BENDING SPRING

SR NO	PRODUCT CODE	SIZE OD(mm)	STANDARD PACK
147	PBS20M	20	05
148	PBS20H	20	05
149	PBS25M	25	05
150	PBS25H	25	05



PVC SOLVENT CEMENT

SR NO	PRODUCT CODE	SIZE OD(mm)	STANDARD PACK
151	PSC250 ML	250ml	24
152	PSC500 ML	500ml	12
153	PSC1L	1L	06
154	PSC5L	5L	01



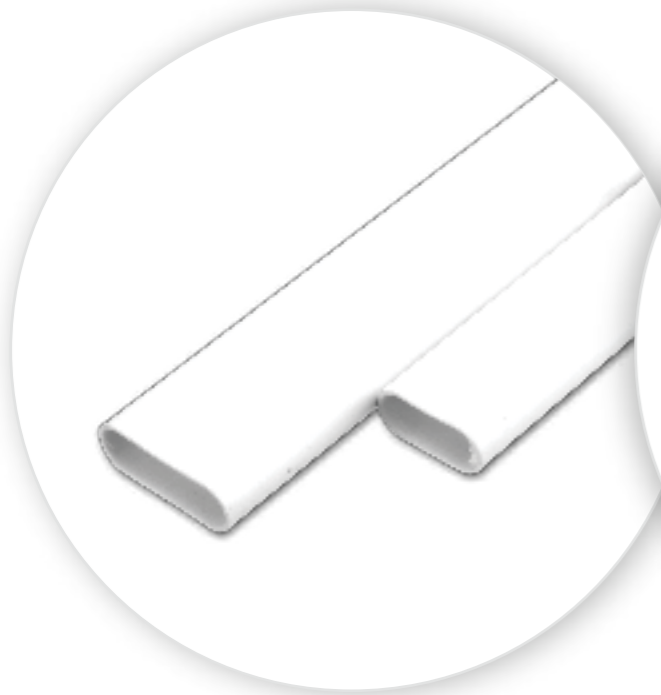
OVAL ELBOW

SR NO	PRODUCT CODE	SIZE OD(mm)	STANDARD PACK
161	POE 16	16	100
162	POE 20	20	75
163	POE 25	25	50



OVAL TEE

SR NO	PRODUCT CODE	SIZE OD(mm)	STANDARD PACK
164	POT 16	16	100
165	POT 20	20	50
166	POT 25	25	40



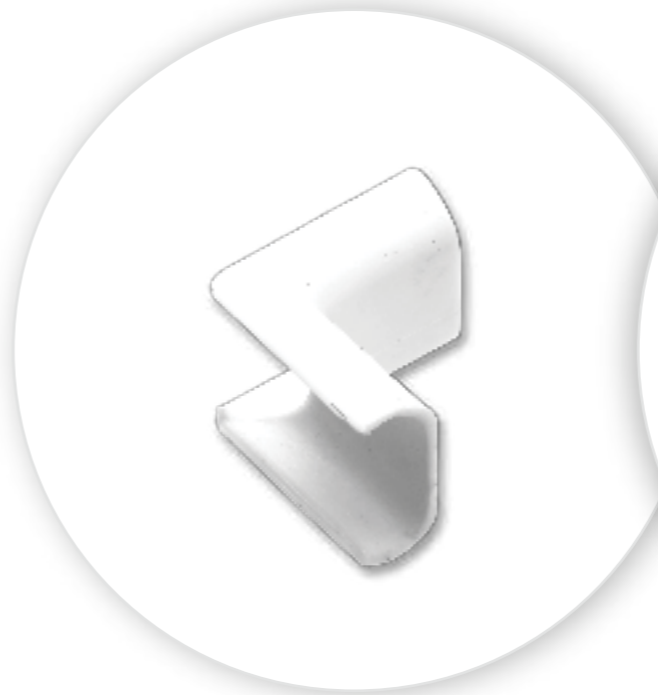
OVAL CONDUIT

SR NO	PRODUCT CODE	SIZE OD(mm)	STANDARD PACK
155	POC 16	16	200X2m
156	POC 20	20	200X2m
157	POC 25	25	100 X2m



OVAL CONNECTOR

SR NO	PRODUCT CODE	SIZE OD(mm)	STANDARD PACK
158	POCT 16	16	100
159	POCT 20	20	50
160	POCT 25	25	50



OVAL INTERNAL BEND

SR NO	PRODUCT CODE	SIZE OD(mm)	STANDARD PACK
167	POIB 16	16	100
168	POIB 20	20	50
169	POIB 25	25	25



OVAL EXTERNAL BEND

SR NO	PRODUCT CODE	SIZE OD(mm)	STANDARD PACK
170	POEB 16	16	100
171	POEB 20	20	50
172	POEB 25	25	25



OVAL SADDLE STRAP

OVAL SADDLE STRAP BASE

SR NO	PRODUCT CODE	SIZE OD(mm)	STANDARD PACK
173	POSS 16	16	100
174	POSS 20	20	100
175	POSS 25	25	100

SR NO	PRODUCT CODE	SIZE OD(mm)	STANDARD PACK
176	POB	Standard	100



OVAL 'U' CLIP

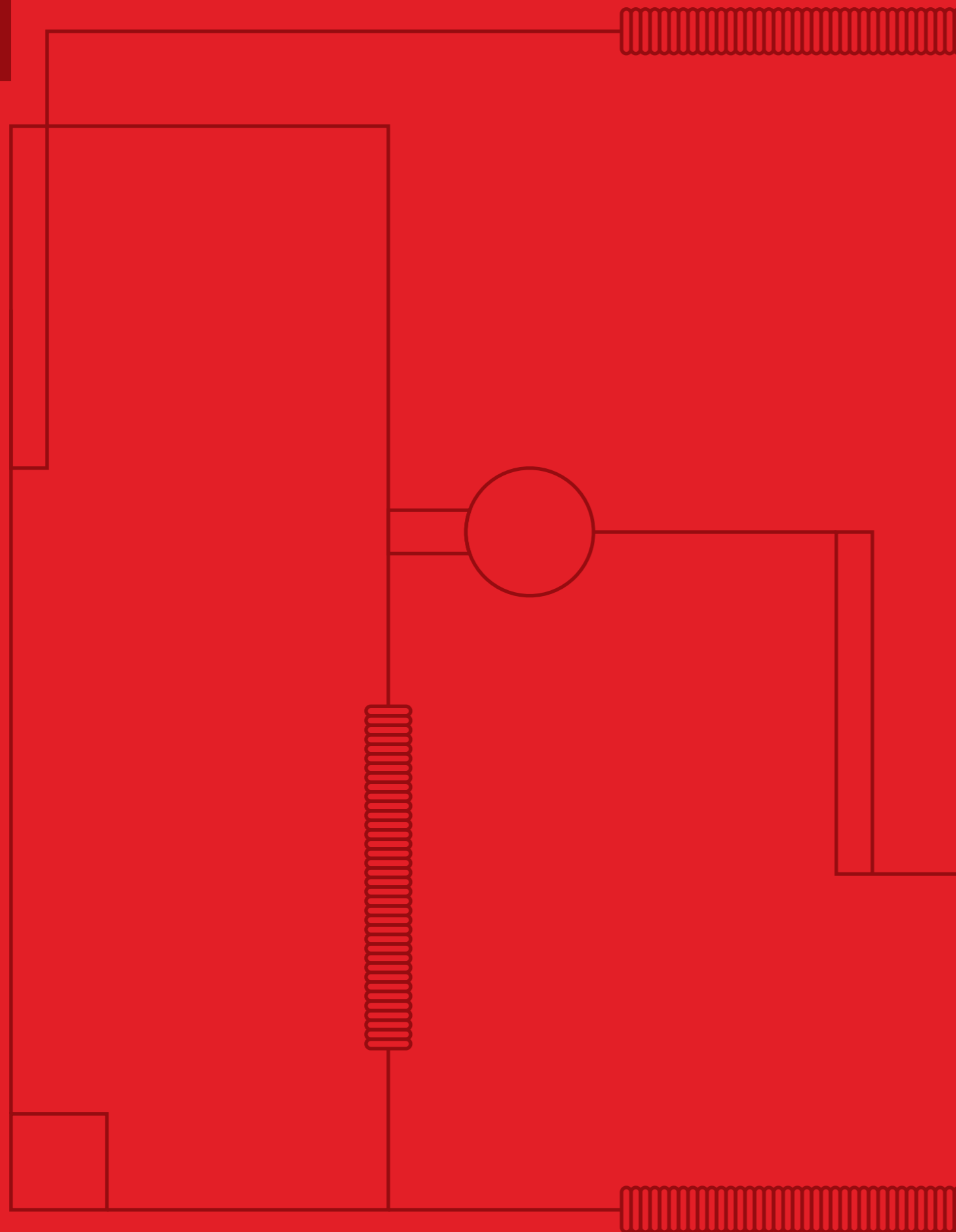
OVAL TO ROUND ADAPTOR

SR NO	PRODUCT CODE	SIZE OD(mm)	STANDARD PACK
177	POU 16	16	200
178	POU 20	20	150
179	POU 25	25	150

SR NO	PRODUCT CODE	SIZE OD(mm)	STANDARD PACK
180	PORA 16	16	100
181	PORA 20	20	50
182	PORA 25	25	25

IF YOU CAN CHOOSE THE COLOUR OF YOUR WALLS, WHY NOT CHOOSE THE COLOUR OF YOUR PIPES?

AT PRECISION, WE MANUFACTURE PIPES IN ANY COLOUR YOU CAN THINK OF.



CORRUGATED FLEXIBLE CONDUIT AND FITTINGS

Precision Corrugated Flexible Conduit Pipes come in a wide and comprehensive range of material variants to suit variety of applications. These conduits are manufactured in slit and non-slit variants based on the final application for wiring purposes.

Polypropylene Flexible Conduits are the best solution for applications where resistance to constant flexing & vibration is essential. These conduits display excellent flexibility, moreover, they are light weight and easy to install which makes them very popular. Temperature resistant from -5°C to $+90^{\circ}\text{C}$. Also available in slit type.

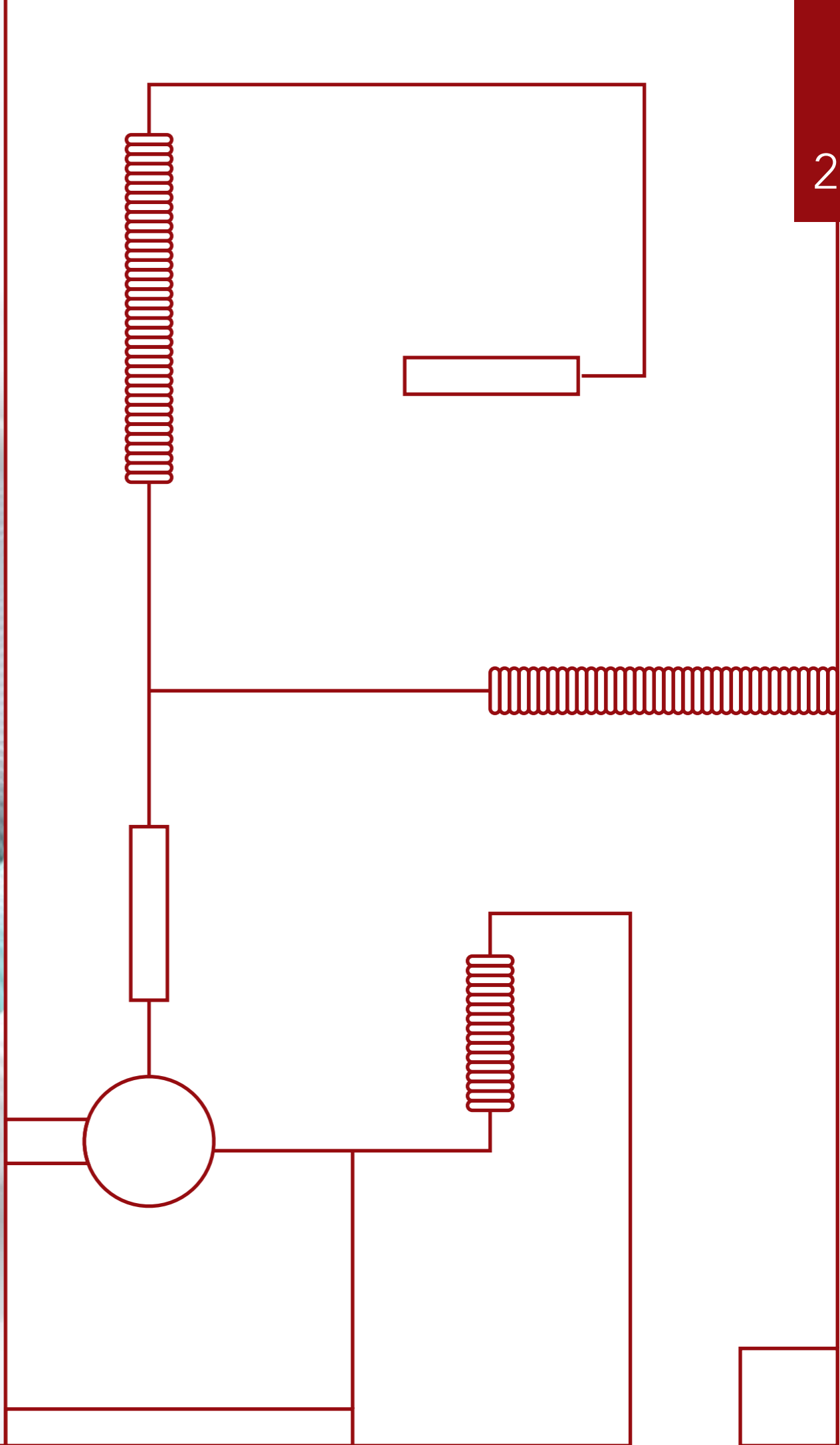
Fire Retardant Polypropylene Flexible Conduits are self extinguishing. These conduits are manufactured from UL94 V2 rated material, ideally suited for automobile applications, wire harnessing, electrical wiring, cable protection & envelope to LPG gas conductors. Temperature resistant from -5°C to $+90^{\circ}\text{C}$. Also available in slit type.

Polyamide Flexible Conduits are manufactured from flame retardant & self extinguishing (PA6) material making them suitable for high temperature zones where human life or components are at risk, high resistance to corrosion by most mineral oils, acids & alkalis. They are widely used in automobile applications and have temperature resistance up to $+200^{\circ}\text{C}$. Also available in slit type.

UPVC Reinforced Flexible Conduits are manufactured with soft & hard UPVC spirally integrated in the surface walls. These conduits are abrasion – proof which makes them appropriate for use in mines, machinery, heavy equipments & industries. Temperature resistant from -5°C to $+60^{\circ}\text{C}$.

Colour

Black, White & Grey. Other colours available on a made-to order basis.





(PP) POLY PROPYLENE

SR NO	PRODUCT CODE	SIZE OD(mm)	STANDARD PACK
183	PCFC 10	10	100
184	PCFC 16	16	50
185	PCFC 20	20	50
186	PCFC 25	25	25
187	PCFC 32	32	25
188	PCFC 36	36	30
189	PCFC 40	40	20
190	PCFC 50	50	15

**FRPP
(FIRE RETARDANT POLY PROPYLENE)**

SR NO	PRODUCT CODE	SIZE OD(mm)	STANDARD PACK
191	PCFR 10	10	100
192	PCFR 16	16	50
193	PCFR 20	20	50
194	PCFR 25	25	25
195	PCFR 32	32	25
196	PCFR 36	36	30
197	PCFR 40	40	20
198	PCFR 50	50	15



NYLON (POLYAMIDE)

SR NO	PRODUCT CODE	SIZE OD(mm)	STANDARD PACK
199	PCPA 10	10	100
200	PCPA 16	16	50
201	PCPA 20	20	50
202	PCPA 25	25	25
203	PCPA 32	32	25

**REINFORCED
FLEXIBLE PVC CONDUIT PIPES**

SR NO	PRODUCT CODE	SIZE OD(mm)	STANDARD PACK
204	PCDH 20	20	30
205	PCDH 25	25	30
206	PCDH 32	32	30
207	PCDH 40	40	30
208	PCDH 50	50	30
209	PCDH 63	63	30



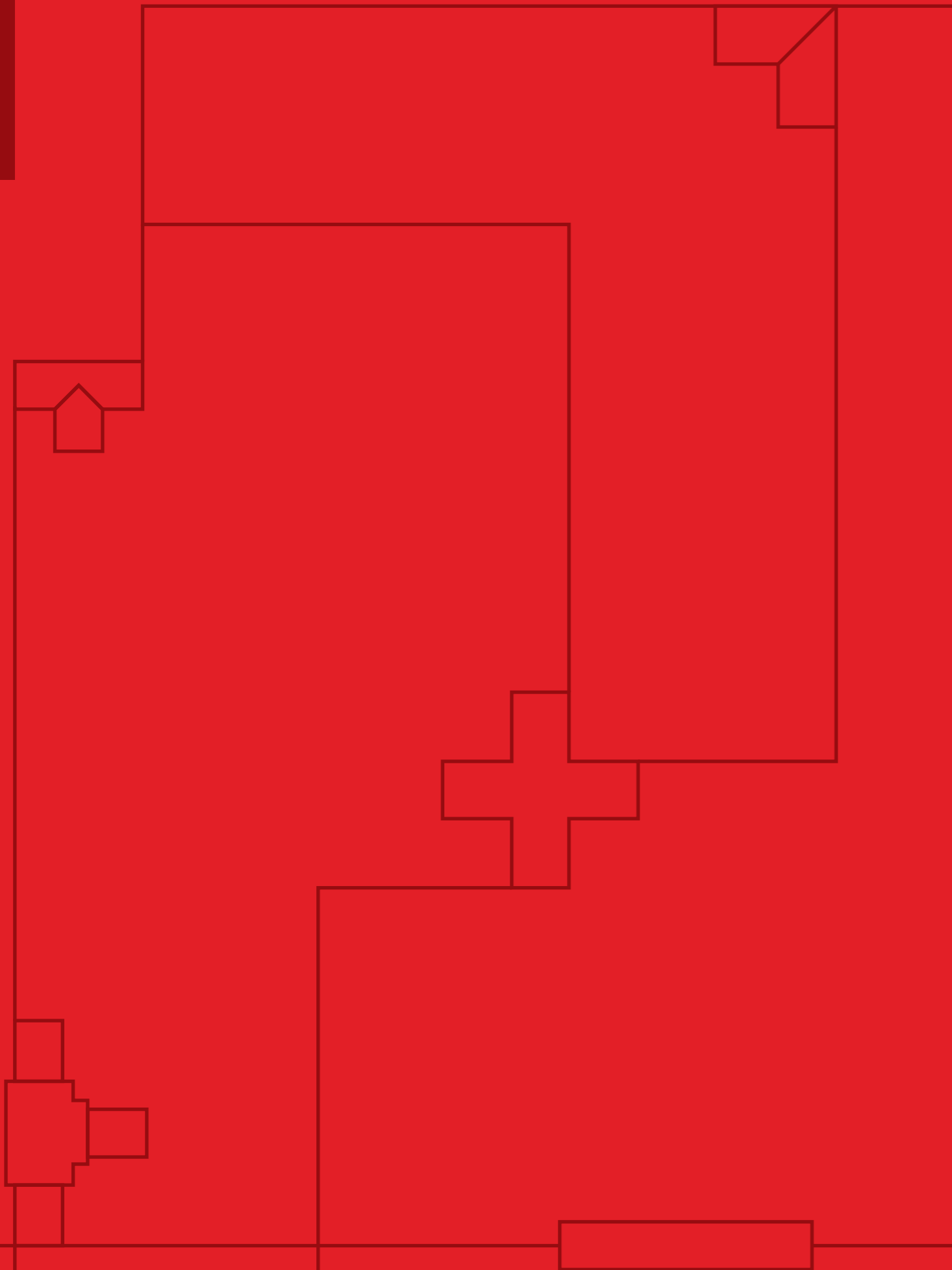
FLEXIBLE ADAPTOR (2 PART)

SR NO	PRODUCT CODE	SIZE OD(mm)	STANDARD PACK
210	PFA 20	20	200
211	PFA 25	25	150

KOPEX ADAPTOR (4 PART)

SR NO	PRODUCT CODE	SIZE OD(mm)	STANDARD PACK
212	PKA 20	20	100
213	PKA 25	25	50





MINI-MAXI TRUNKING AND FITTINGS

Precision Mini-Maxi Trunking & Fittings are manufactured from High Impact unplasticised polyvinyl chloride (UPVC) grade material capable of withstanding the most hazardous conditions on-site & exceeds the most stringent requirements of Indian and international standards. The products range brings a whole new world of sophistication and convenience to home, office & commercial establishments and is in accordance with Indian Standards **IS: 14927 Part 2** and **BS: EN 50085-2-1**. Mini Trunking are also available with self fixing tape for instant and easy installation. Clip on lid provides security while allowing easy maintenance.

Precision Maxi Trunking Cable Management System is designed for convenience and safety with compartments for separate wiring applications. Maxi Trunking fittings are available in moulded and fabricated form, thus adding a sleek touch to your interiors.

Application

To organise & protect cables on surface.

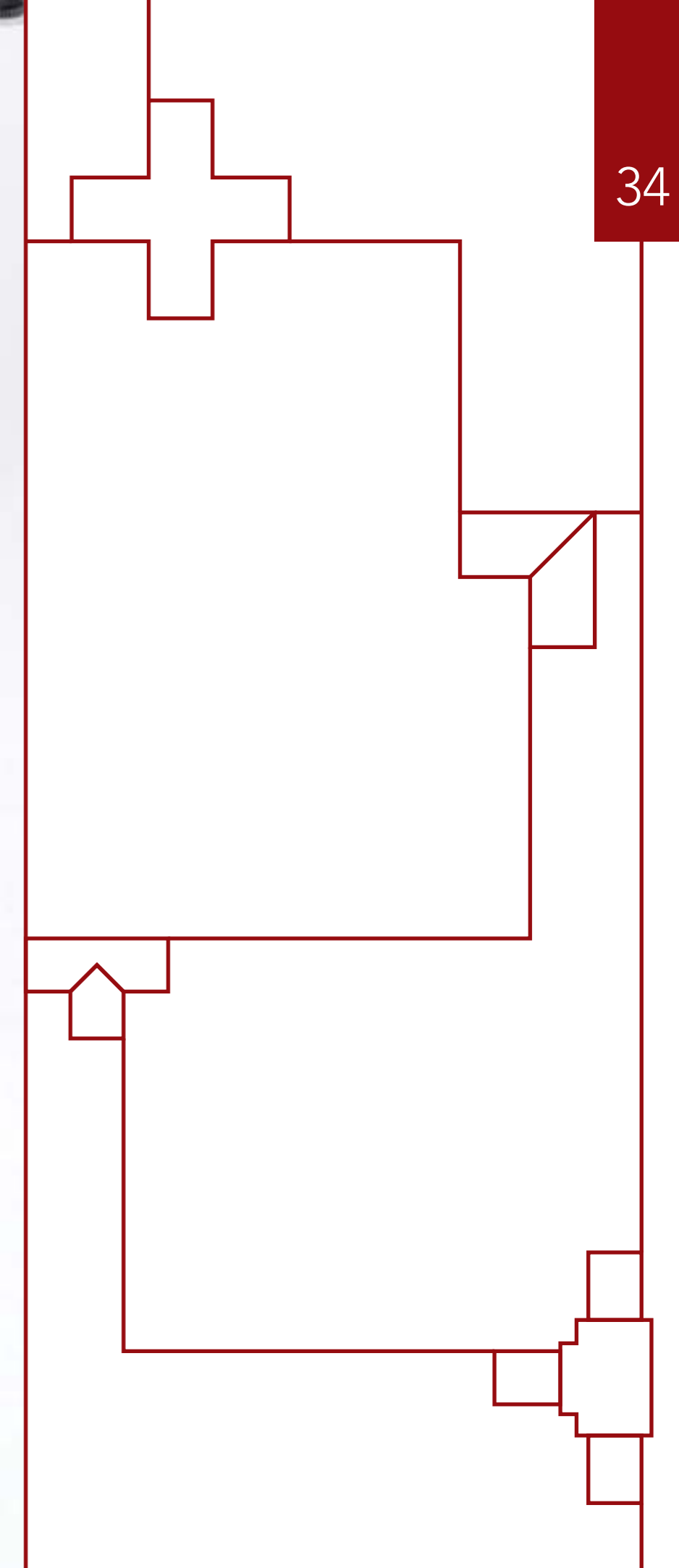
Features

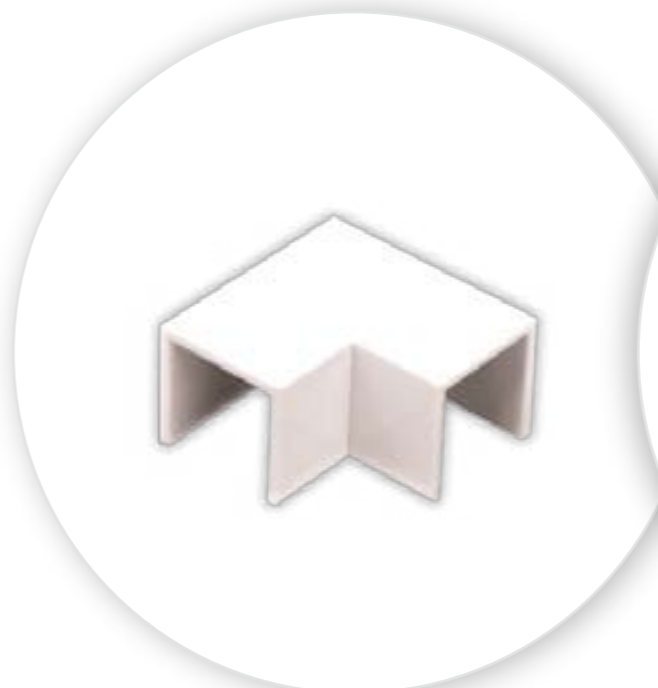
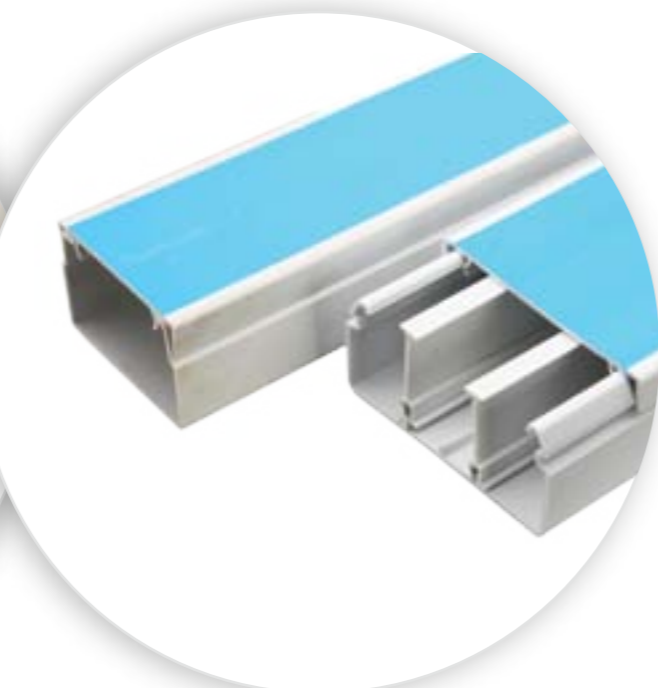
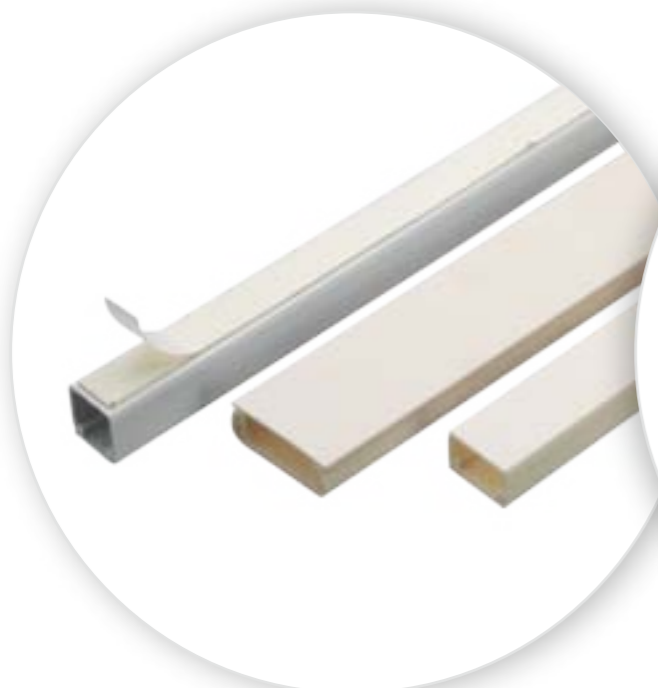
Fast installation & easy maintenance.
Secure & elegant look.
Wide range of sizes to suit all cabling requirements.
Durable & impact resistant.
Fire retardant.
Corrosion free.
Thermal resistant from -5°C to $+60^{\circ}\text{C}$.

Colour

Ivory & White . Other colours available on a made-to-order basis.







UPVC MINI TRUNKING

SR NO	PRODUCT CODE	SIZE OD(mm)	STANDARD PACK
214	PT 2012	20X12	100X2m
215	PT 2512	25X12	100X2m
216	PT 3212	32X12	100X2m
217	PT 1616	16X16	100X2m
218	PT 2516	25X16	100X2m
219	PT 3816	38X16	50X2m
220	PT 3825	38X25	50X2m
221	PT 3838	38X38	25X2m
222	PT 5016	50X16	50X2m
223	PT 5050	50X50	15X2m

UPVC MAXI TRUNKING

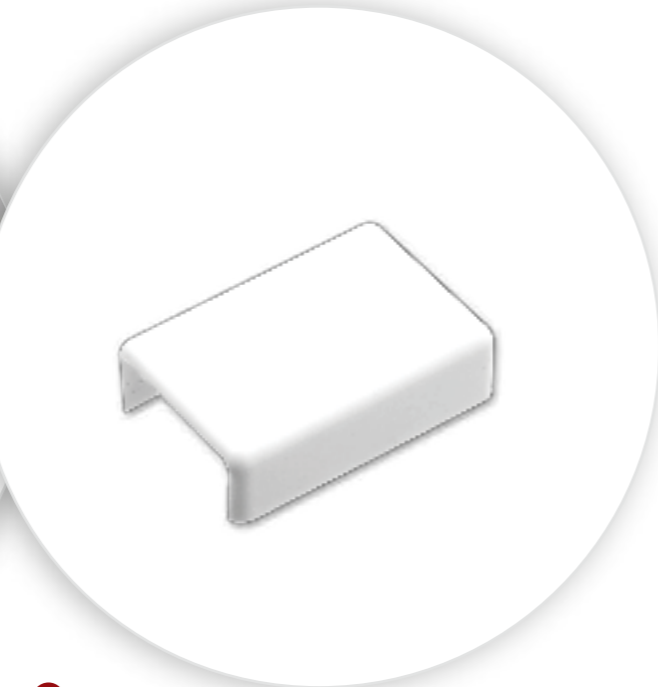
SR NO	PRODUCT CODE	SIZE OD(mm)	STANDARD PACK
224	PT 7550	75X50	9X2m
225	PT 7575	75X75	9X2m
226	PT 10050	100X50	10X2m
227	PT 100100	100X100	6X2m

ELBOW

SR NO	PRODUCT CODE	SIZE OD(mm)	STANDARD PACK
239	PTB 2012	20X12	100
240	PTB 2512	25X12	100
241	PTB 3212	32X12	100
242	PTB 1616	16X16	100
243	PTB 2516	25X16	100
244	PTB 3816	38X16	100
245	PTB 3825	38X25	100
246	PTB 5050	50X50	01
247	PTB 10050	100X50	01

TEE

SR NO	PRODUCT CODE	SIZE OD(mm)	STANDARD PACK
248	PTT 2012	20X12	100
249	PTT 2512	25X12	50
250	PTT 3212	32X12	50
251	PTT 1616	16X16	100
252	PTT 2516	25X16	50
253	PTT 3816	38X16	50
254	PTT 3825	38X25	50
255	PTT 5050	50X50	01
256	PTT 10050	100X50	01



UPVC MAXI TRUNKING DIVIDER

SR NO	PRODUCT CODE	SIZE OD(mm)	STANDARD PACK
228	PMTD 10050	100X50	50X2m
229	PMTD 100100	100X100	50X2m

COUPLER

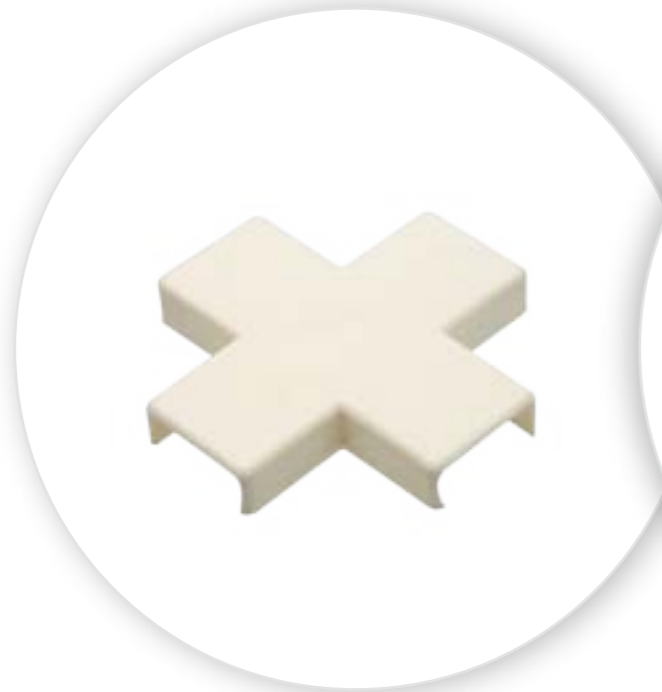
SR NO	PRODUCT CODE	SIZE OD(mm)	STANDARD PACK
230	PTC 2012	20X12	100
231	PTC 2512	25X12	100
232	PTC 3212	32X12	100
233	PTC 1616	16X16	100
234	PTC 2516	25X16	100
235	PTC 3816	38X16	50
236	PTC 3825	38X25	50
237	PTC 5050	50X50	01
238	PTC 10050	100X50	01

INTERNAL BEND

SR NO	PRODUCT CODE	SIZE OD(mm)	STANDARD PACK
257	PTI 2512	25X12	100
258	PTI 3212	32X12	100
259	PTI 1616	16X16	100
260	PTI 2516	25X16	100
261	PTI 3816	38X16	100
262	PTI 3825	38X25	100
263	PTI 5050	50X50	01
264	PTI 10050	100X50	01

EXTERNAL BEND

SR NO	PRODUCT CODE	SIZE OD(mm)	STANDARD PACK
265	PTE 2512	25X12	100
266	PTE 3212	32X12	100
267	PTE 1616	16X16	100
268	PTE 2516	25X16	100
269	PTE 3816	38X16	100
270	PTE 3825	38X25	100
271	PTE 5050	50X50	01
272	PTE 10050	100X50	01



4 WAY

SR NO	PRODUCT CODE	SIZE OD(mm)	STANDARD PACK
273	PTW 32X12	32X12	50



JUNCTION LINKER

SR NO	PRODUCT CODE	SIZE OD(mm)	STANDARD PACK
274	PTJL7575 P	Standard	25



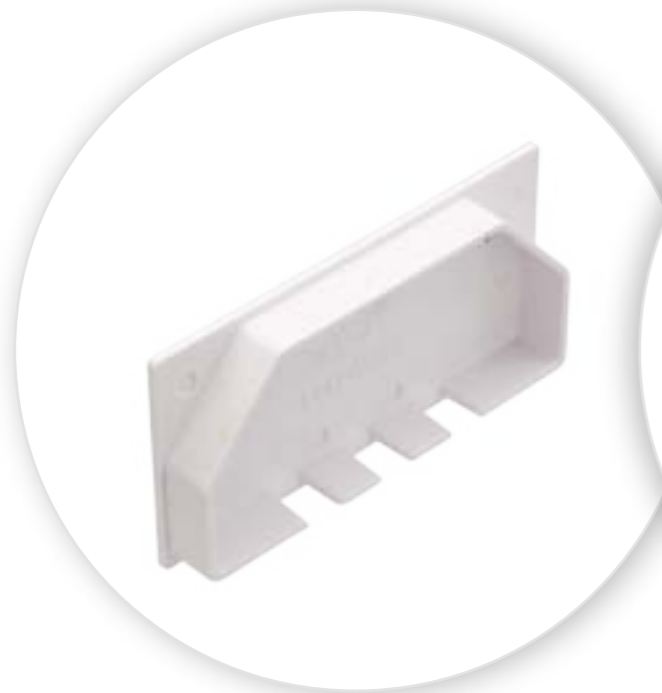
**SURFACE SWITCH BOX
(Trunking Knockout)**

SR NO	PRODUCT CODE	SIZE OD(mm)	STANDARD PACK
279	PTSB1	3'X3'	10
280	PTSB2	6'X3'	10



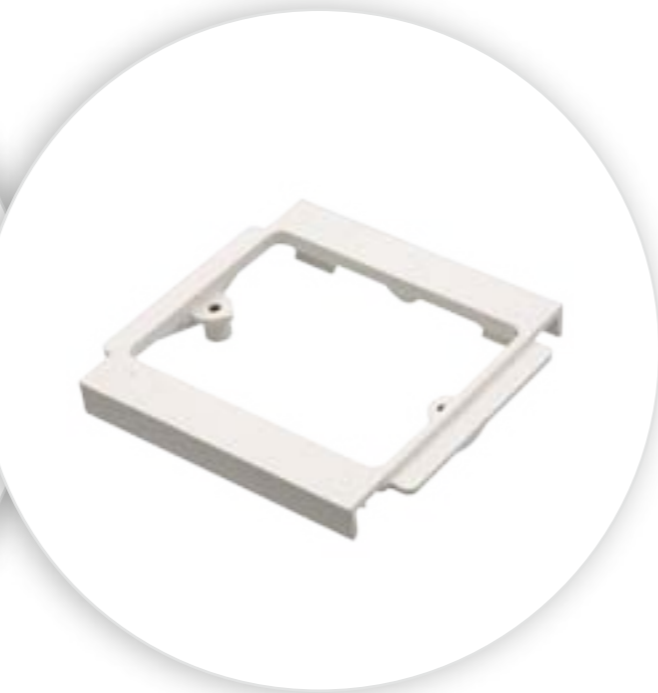
ELBOW

SR NO	PRODUCT CODE	SIZE OD(mm)	STANDARD PACK
281	PMTL 751	75X50	01
282	PMTL 752	75X75	01
283	PMTL 1002	100X100	01



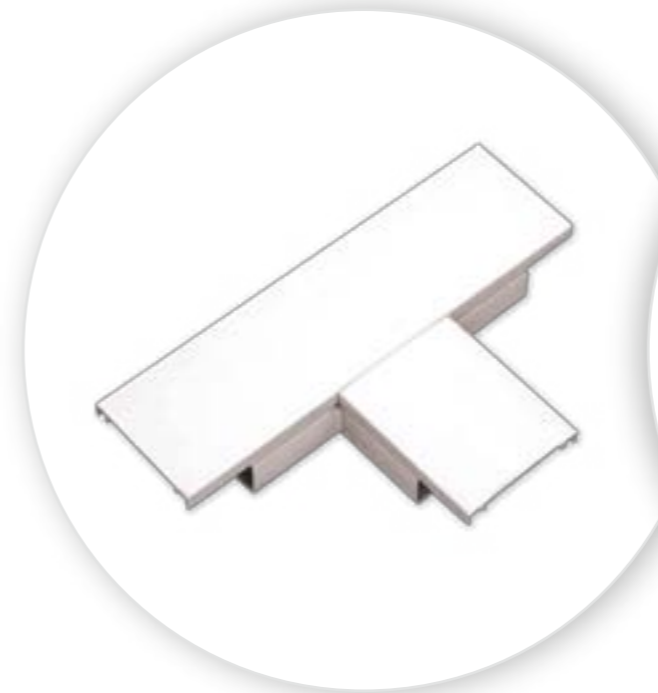
END CAP

SR NO	PRODUCT CODE	SIZE OD(mm)	STANDARD PACK
275	PMTC 50	50X50	50
276	PMTC 100	100X50	50



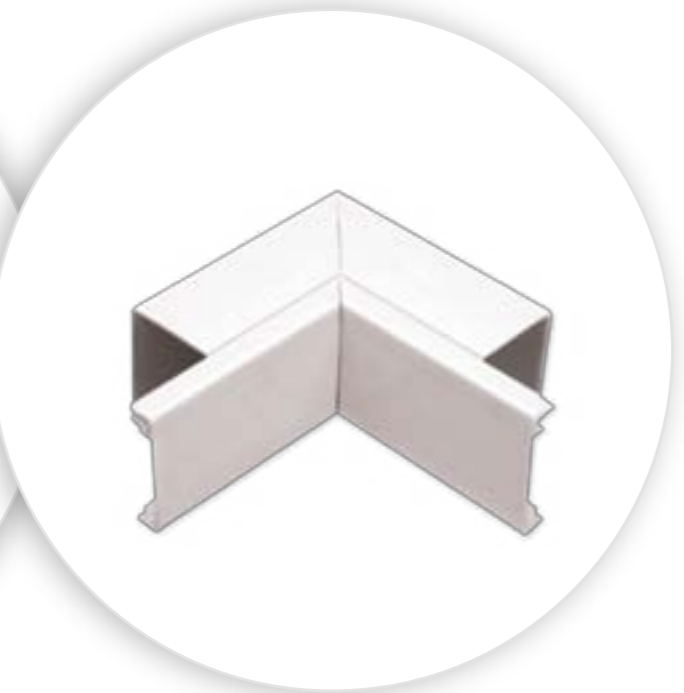
SOCKET MOUNTING FRAME

SR NO	PRODUCT CODE	SIZE OD(mm)	STANDARD PACK
277	PMTS1	1 GANG	30
278	PMTS2	2 GANG	20



TEE

SR NO	PRODUCT CODE	SIZE OD(mm)	STANDARD PACK
284	PMTT 751	75X50	01
285	PMTT 752	75X75	01
286	PMTT 1002	100X100	01



INTERNAL ANGLE

SR NO	PRODUCT CODE	SIZE OD(mm)	STANDARD PACK
287	PMTI 751	75X50	01
288	PMTI 752	75X75	01
289	PMTI 1002	100X100	01



EXTERNAL ANGLE

FLAT ANGLE 135°

SR NO	PRODUCT CODE	SIZE OD(mm)	STANDARD PACK
290	PMTE 751	75X50	01
291	PMTE 752	75X75	01
292	PMTE 1002	100X100	01

SR NO	PRODUCT CODE	SIZE OD(mm)	STANDARD PACK
293	PTFA 50	50X50	01
294	PTFA 751	75X50	01
295	PTFA 752	75X75	01
296	PTFA 1001	100X50	01
297	PTFA 1002	100X100	01



INTERNAL ANGLE 135°

EXTERNAL ANGLE 135°

SR NO	PRODUCT CODE	SIZE OD(mm)	STANDARD PACK
298	PTIA 50	50X50	01
299	PTIA 751	75X50	01
300	PTIA 752	75X75	01
301	PTIA 1001	100X50	01
302	PTIA 1002	100X100	01

SR NO	PRODUCT CODE	SIZE OD(mm)	STANDARD PACK
303	PTEA 50	50X50	01
304	PTEA 751	75X50	01
305	PTEA 752	75X75	01
306	PTEA 1001	100X50	01
307	PTEA 1002	100X100	01



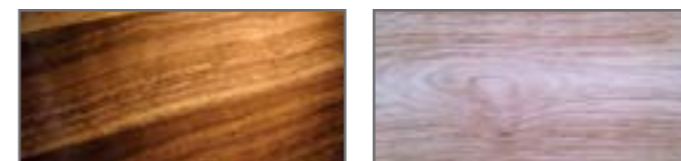
INTERNAL TEE 90°

EXTERNAL TEE 90°

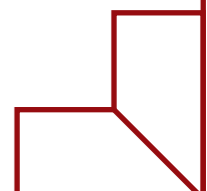
SR NO	PRODUCT CODE	SIZE OD(mm)	STANDARD PACK
308	PTIT 50	50X50	01
309	PTIT 751	75X50	01
310	PTIT 752	75X75	01
311	PTIT 1001	100X50	01
312	PTIT 1002	100X100	01

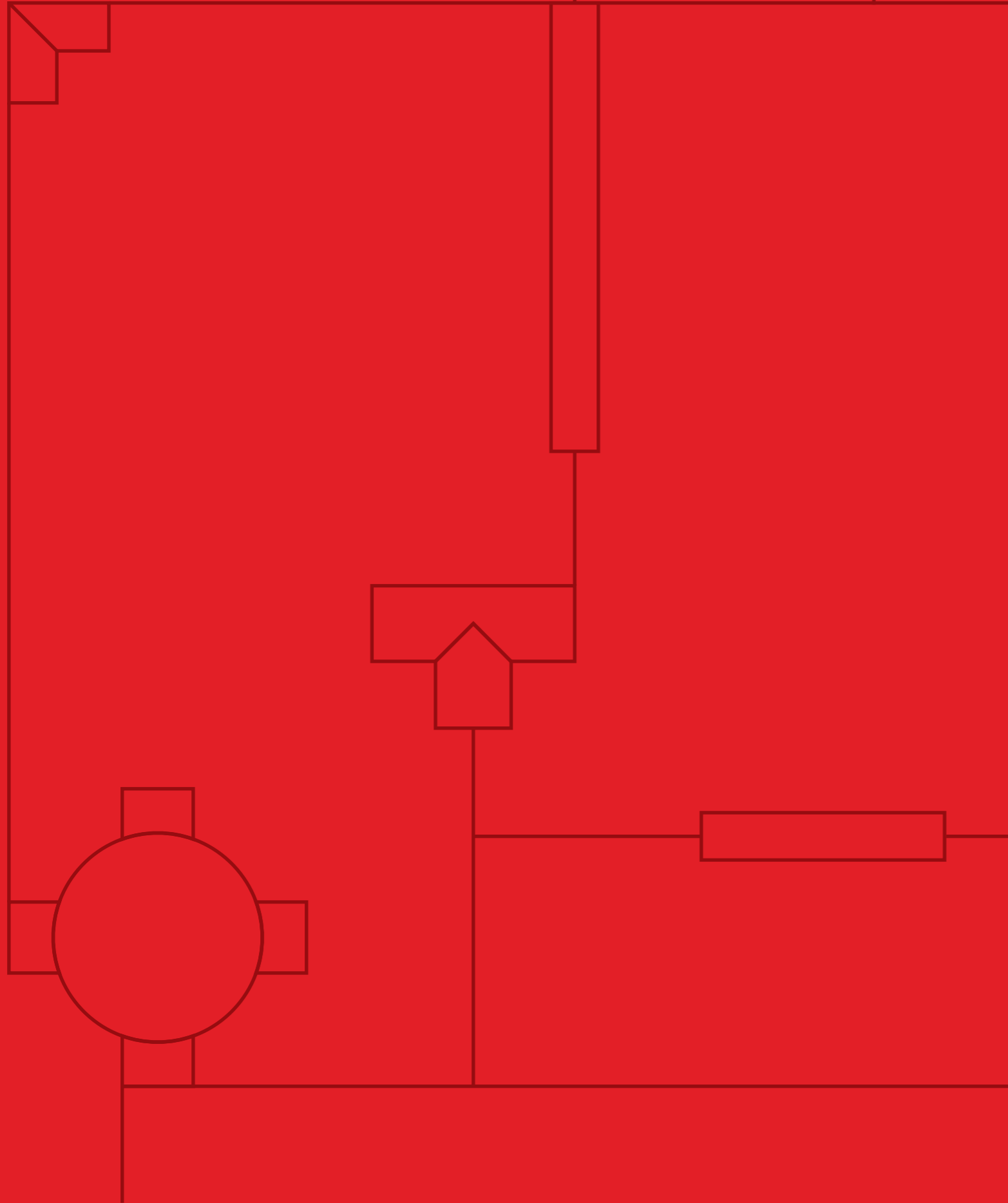
SR NO	PRODUCT CODE	SIZE OD(mm)	STANDARD PACK
313	PTET 50	50X50	01
314	PTET 751	75X50	01
315	PTET 752	75X75	01
316	PTET 1001	100X50	01
317	PTET 1002	100X100	01

DECORATIVE WOOD GRAIN FINISHES FOR MAXI TRUNKING



Available in sizes at extra cost.
 100 x 50 mm
 100 x 100 mm





PANEL TRUNKING

Precision Panel Trunking are manufactured from High Impact unplasticised polyvinyl chloride (UPVC) to ensure panel & machinery safety in extreme conditions. These trunkings are ideal to channelise medium and big size panels & various applications where economy, space saving, safety and durability are paramount.

Applications

To conduct, organize and protect cables inside Electrical & Telecommunication panels, Industrial machinery wiring, Computer LAN wiring & Data centers.

Features

Non-brittle, flame retardant and wrap proof.
 Vertical slids & detachable strips facilitates systematic wiring, permits faster connections, additions & fault tracing of wires.
 Avoids bunching, taping & provides complete electrical insulation.
 Unique cover locking design prevents popping of wires while removing cover.
 Elongated slots at bottom allows flexible mounting.
 High tensile strength 390 Kg/cm².
 Thermal resistant from -5°C to +60°C.

Colour

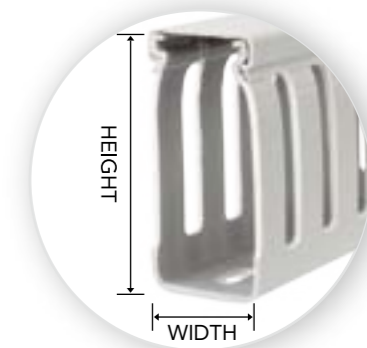
Grey.





OPTIMAL GRIP LID

- Precision's Panels Trunking lid design provides high capacity to sustain leads of wire in the case of a cable positioned in the centre of the duct and avoids them from riding up.
- Quick snap on / off and non-slip assembly forms a firm rigid channel.

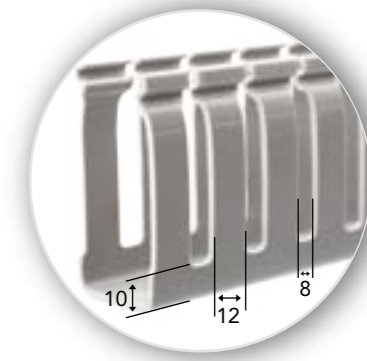


- Interlocking lid and channel is optimised to make the system easier to install and provided discrete routing of cables.
- Uniform grip and thickness throughout the length system with independent non-slip lid, keeps cover in place during high vibration applications.



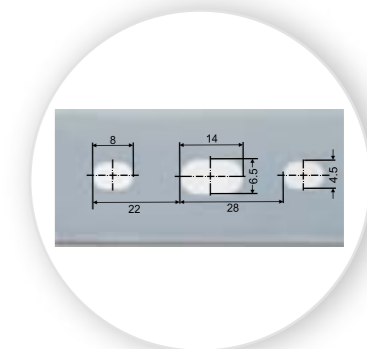
WALL PERFORATION RIB DESIGN

- All wall perforation ribs of Precision Panel Trunking have larger rounded slots for easy insertion of wires and cables.
- Rounded design with burr-free edges to prevent any injury to the hand of the user or to the cable insulation.

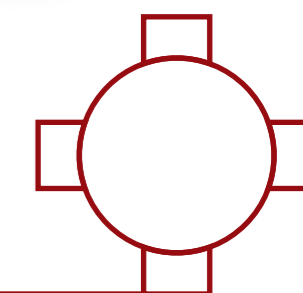


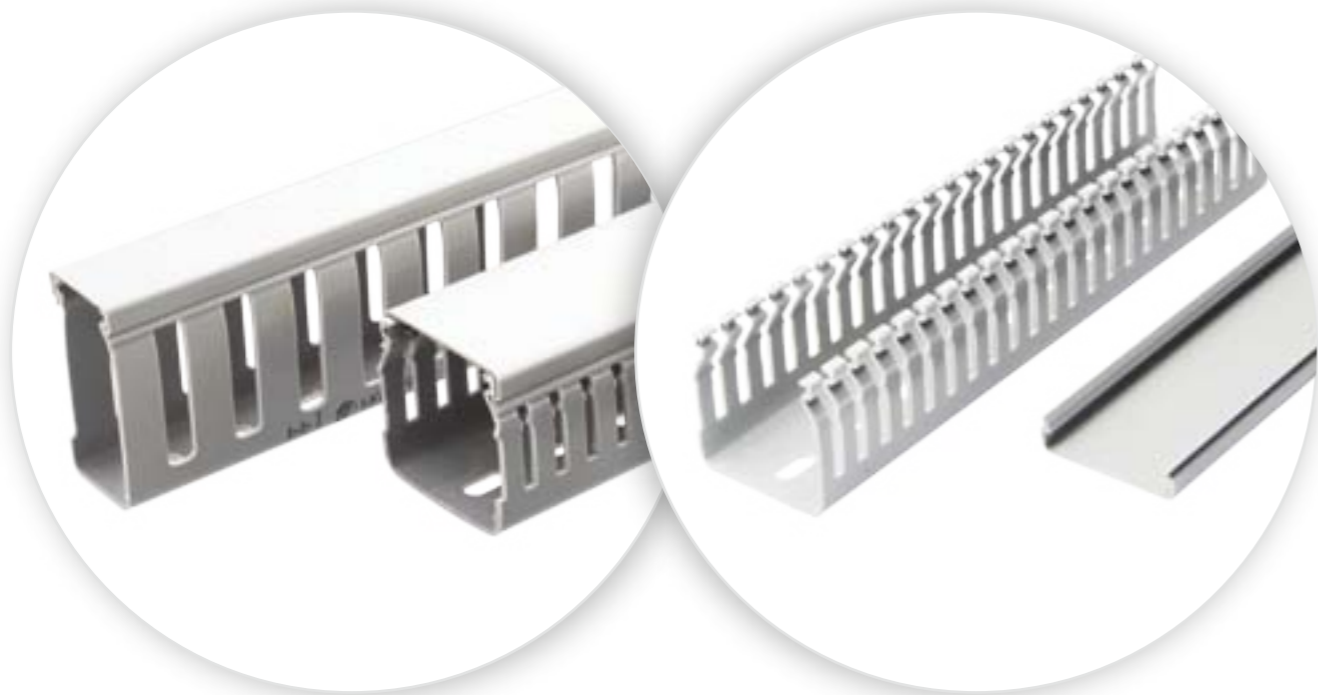
ELONGATED MOUNTING SLOTS

- Perforated base with elongated slot allows flexible mounting and better fastening of the cables.
- Robust sections.



• ALL DIMENSIONS IN (mm)





**UPVC PANEL TRUNKING
(CABLE DUCT)**

SR NO	PRODUCT CODE	SIZE OD(mm)	STANDARD PACK
318	PPT 1515	15x15	200 X 1m
319	PPT 2525	25x25	130 X 1m
320	PPT 3025	30x25	125 X 1m
321	PPT 4525	45x25	90 X 1m
322	PPT 4545	45x45	50 X 1m
323	PPT 4560	45x60	50 X 1m
324	PPT 6025	60x25	70 X 1m
325	PPT 6040	60x40	60 X 1m
326	PPT 6045	60x45	50 X 1m
327	PPT 6060	60x60	40 X 1m
328	PPT 7525	75x25	60 X 1m
329	PPT 7575	75x75	30 X 1m
330	PPT 10075	100x75	24 X 1m
331	PPT 100100	100x100	16 X 1m

UPVC PANEL TRUNKING TOP COVER

SR NO	PRODUCT CODE	SIZE OD(mm)	STANDARD PACK
332	PPT 25T	25mm	100X1m
333	PPT 45T	45mm	50X1m
334	PPT 60T	60mm	50X1m
335	PPT 75T	75mm	25X1m
336	PPT 100T	100mm	25X1m

* AVAILABLE WITH NORMAL & THIN SLOTS IN 1 MTR & 2 MTR LENGTH.
* PANEL TRUNKING ALSO AVAILABLE WITHOUT SLOTS.

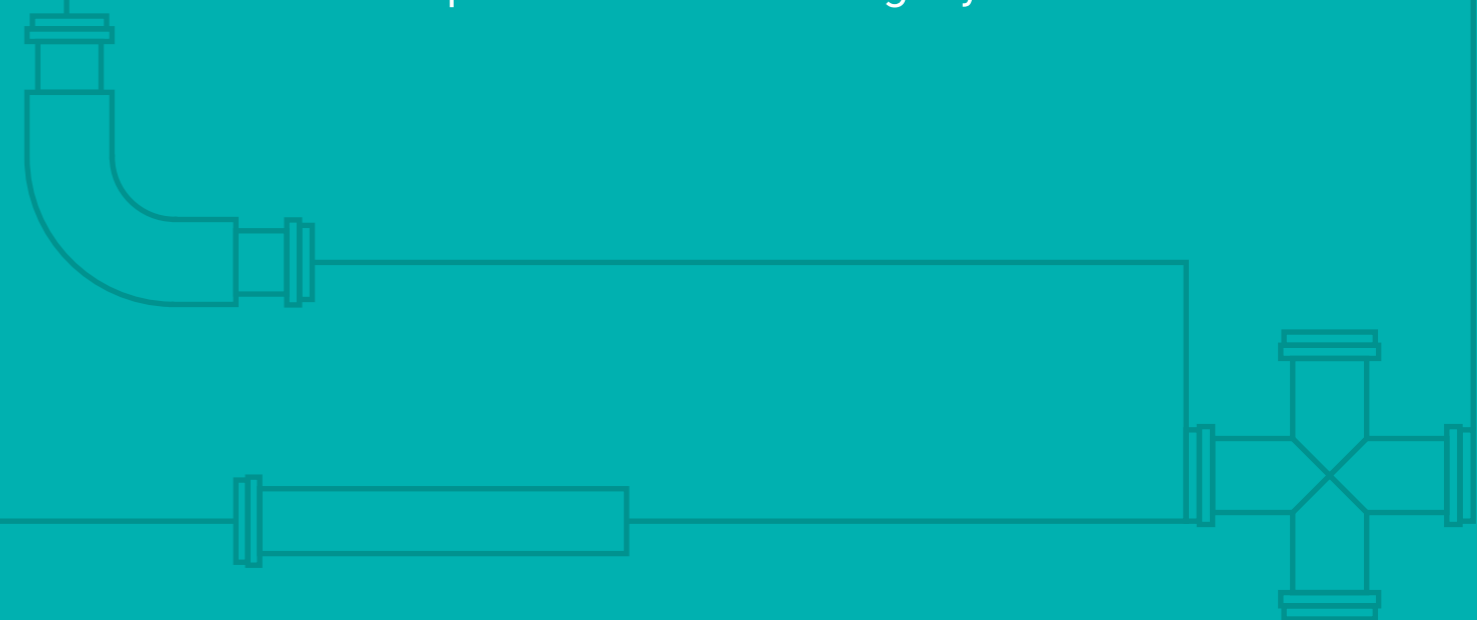


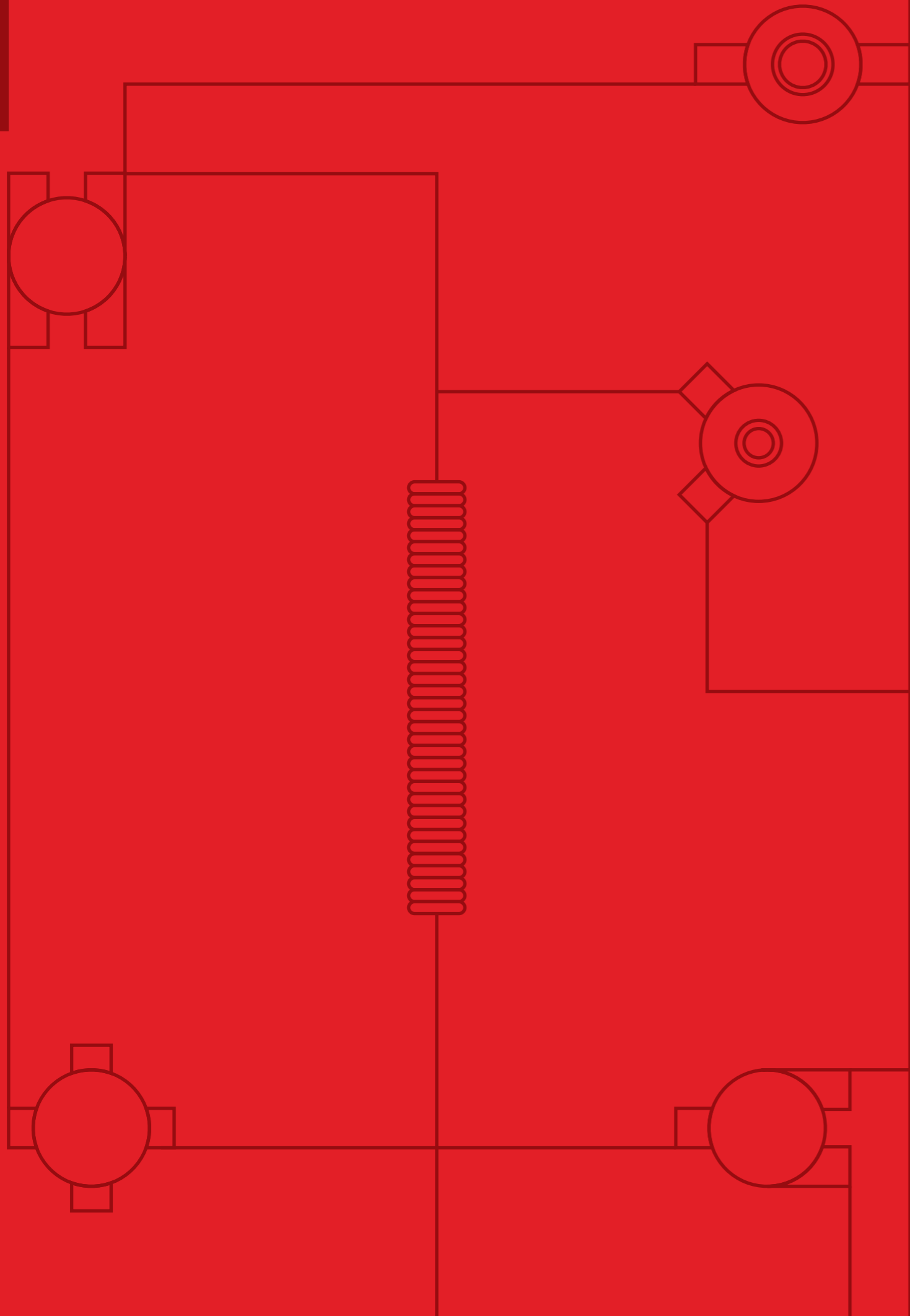


YOU SEE PIPE. WE SEE LIFE.

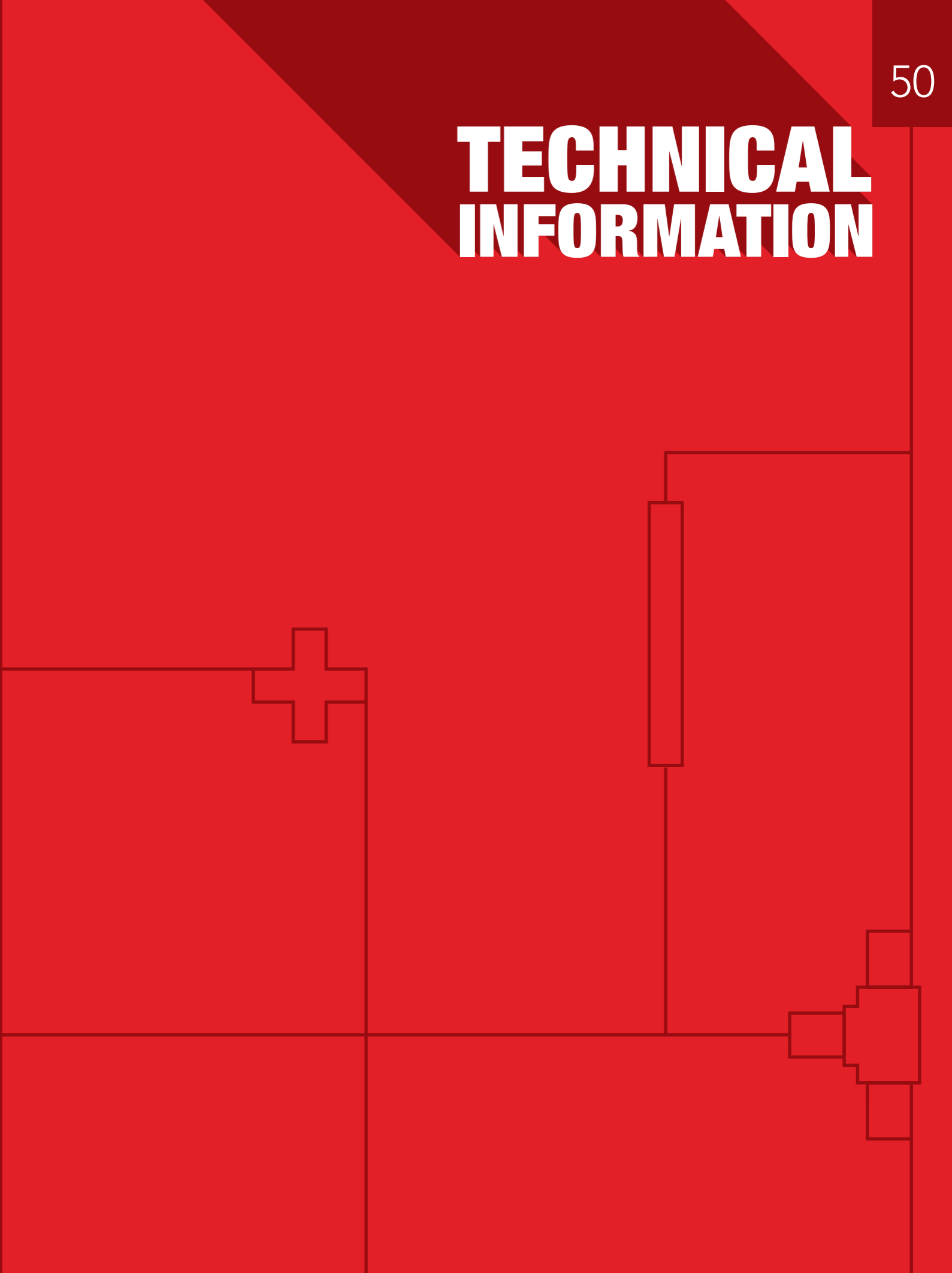
At Precision, we take immense pride in the quality and durability of our products. We believe our pipes and fittings bring life to every home in the form of water and electricity. It is this belief that motivates us everyday to bring the best to you.

Visit www.precisionppi.com to
Explore our Plumbing Systems





TECHNICAL INFORMATION



CHARACTERISTICS OF PRECISION HIGH IMPACT UPVC

Specific Gravity	: 1.40 - 1.46
Impact Resistance	: High impact resistance. The material is formulated to comply with -5°C to 60°C to IS: 9537 Part 3 and IS: 14927 Part 2 Cable Trunking Standards.
Tensile Strength	: 450/565 kg/cm ²
Chemical Resistance	: The material is virtually unaffected by inorganic acid, alkalis, and salt.
Coefficient of linear Expansion	: 7x10/m/deg.C
Water Absorption	: Negligible
Flammability	: IS: 9537 Part 3, IS: 3419, IS: 14927 Part 2, BS:4607 and BS: EN61386 -1: 2008
Vicat. Softening point (Pipe & Trunking)	: 80°C
Vicat. Softening point (Moulded Fittings)	: 76°C
Oxygen Index	: 40%
Electric Strength	: To the requirement of IS: 9537 Part 3. IS: 3419, IS: 14927 Part 2, BS: 4607 and BS: EN61386 -1: 2008
Insulation Resistance	: To the requirements of IS: 9537 Part 3, IS: 3419, IS: 14927 Part2, BS: 4607 and BS: EN61386 -1: 2008
Operating Temperature	: 5°C to +60°C

STANDARDS

Conduit	: IS: 9537 Part 3, BS: EN61386 -1: 2008
Conduit Fittings	: IS: 3419 with latest amendment, BS: 4607
Trunking	: IS: 14927 Part 2, BS: EN 50085-2-1: 2006

Quality Confirmation



Low Voltage Directive



Precision products that comes within the scope of Low Voltage Directive (LVC) 2006/95/EC, RoHS Directive 2002/95/EC will be CE marked on their product or packaging that they meet the necessary requirements of the directive.

UI Certification For Plastic Component



CONDUIT AND TRUNKING

The following notes are intended to be a guide to the installation of Precision Conduit, Trunking and Fitting. To ensure safety in installation, commissioning and maintenance, work should be undertaken by competent personnel and accordance with relevant codes of practice and statutory requirements. Information on installation can be found in:

- Regulations, Indian standards specifications and code of practice.
- Regulation for electrical equipment of buildings (IEE publication).

CONDUIT

Choice of Conduit

The choice depends on the type of work being undertaken and the specification, Heavy Mechanical Stress (HMS) and Medium Mechanical Stress (MMS) Round Conduits are normally used in casting in situ and surface work. Light Mechanical Stress (LMS) Conduit is suitable for concealed work in drops and in screeds. Oval Conduit is normally chosen for use in plastered walls and can be used as switch drops in surface work. Trunking are generally used as a method of installing cables in domestic / commercial in surface work and installation beneath plaster.

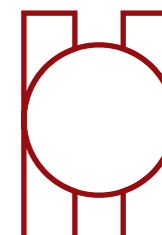
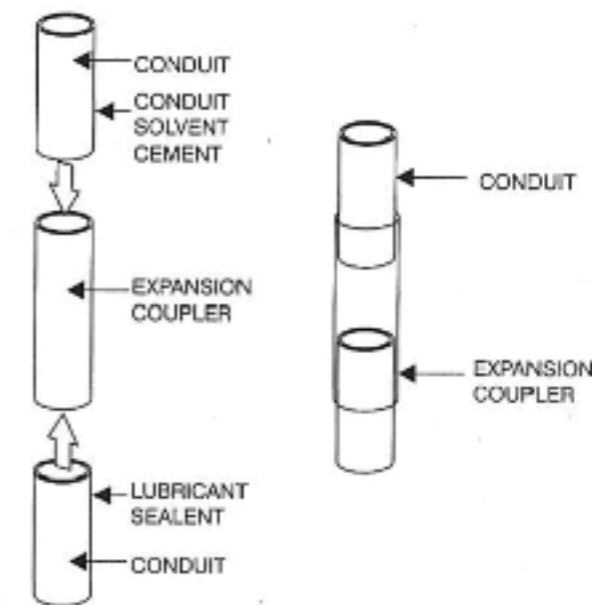
Surface Installation

All horizontal runs of conduit should be secured at a maximum distance of 0.9 meter and vertical runs should be secured at a maximum of 1.2 meter. For high ambient temperatures or where rapid changes in temperature are likely to be encountered the distance should be reduced. At fittings or where directional changes takes place the conduit should be fastened approximately 150 mm either side to maintain support. The fastening should not be over tightened to permit thermal movement of the conduit.

Joint and Couplers

To accommodate for thermal movement due to temperature change on surface installations, it is recommended that expansion couplers be used at a maximum distance of 6 meters intervals. Where high ambient temperature or frequent variation in temperature is likely to occur this distance should be reduced. Expansion couplers are installed with the short side coated with solvent cement and coupler pushed firmly over the conduit down to nib. The slip side coated with silicon grease receives the conduit to a midpoint to the nib. This will then permit for expansion or contraction providing the conduit is free to move in the saddle.

Conduit fittings are installed in the system using solvent cement for permanent installation and silicon grease where installation is subject to frequent changes.



Joining

PVC solvent cement is the recommended method of joining Conduit into fitting like couplings, adaptors, bends, and boxes. Precision solvent cement is especially formulated for watertight permanent joint.

BONDING INSTRUCTIONS

Conduits and Fittings to be bonded must be clean, dry and free from oil moisture, dirt and grease.

- Cut the pipe, remove burr from the both inside and outside of the pipe with knife, file or reamer.
- Apply an even layer of cement to to the pipe and fitting.
- Immediately push the pipe into the fitting together to the full depth without twisting. Hold in place for 30 seconds and clean off excess cement.

Bending

Bending of conduit up to 25 mm in diameter can be carried out using correct size and gauge of bending spring. It should be noted that heavy gauge spring is plated yellow colour for heavy conduit and medium / light gauge spring is plated silver colour for medium and light pipe. These springs are not interchangeable. Make sure they are not damaged in any way as this can cause the conduit to kink and fracture making removal of spring difficult.

Cold Bending

To bend the Conduit, insert the spring to the desired position, grip the conduit on either side of the bend and bring slowly together to form the bend. The bend should be made more acute than necessary because of tendency of the PVC to recover after bending. Pull the spring gently; do not pull too hard otherwise damage to spring may occur. The conduit should then be fastened into position to prevent further recovering.

Hot Bending

For Conduit sizes over 25 mm diameter, hot bonding is required, with same procedure as cold bending but with the application of gentle heat just prior to bending with care being taken to avoid the direct application of flame to the conduit. When the conduit is in pliable state, slowly bend around a suitable former, holding the position for about one minute until set.

If the conduit is bent too fast or, particularly in the case of light conduit, there is a risk of damage to both the conduit and spring. Similarly once the bend has been made it should not be forced backwards, but be allowed to recover naturally.

Earthing

The properties of PVC make it an all insulated system and the use of separate earth cable is essential which greatly reduces the risk of poor earth continuity that can result from any breakdown of joint, which may occur in a steel system.

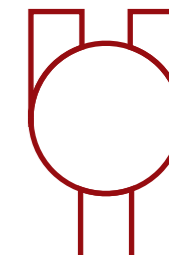
DIMENSIONS OF ROUND CONDUIT PVC PIPES IS : 9537 PART 3

Nominal Size mm	Outside Diameter mm	Tolerance on outside Diameter mm
16	16	-0.3
20	20	-0.3
25	25	-0.4
32	32	-0.4
40	40	-0.4
50	50	-0.5
63	63	-0.6

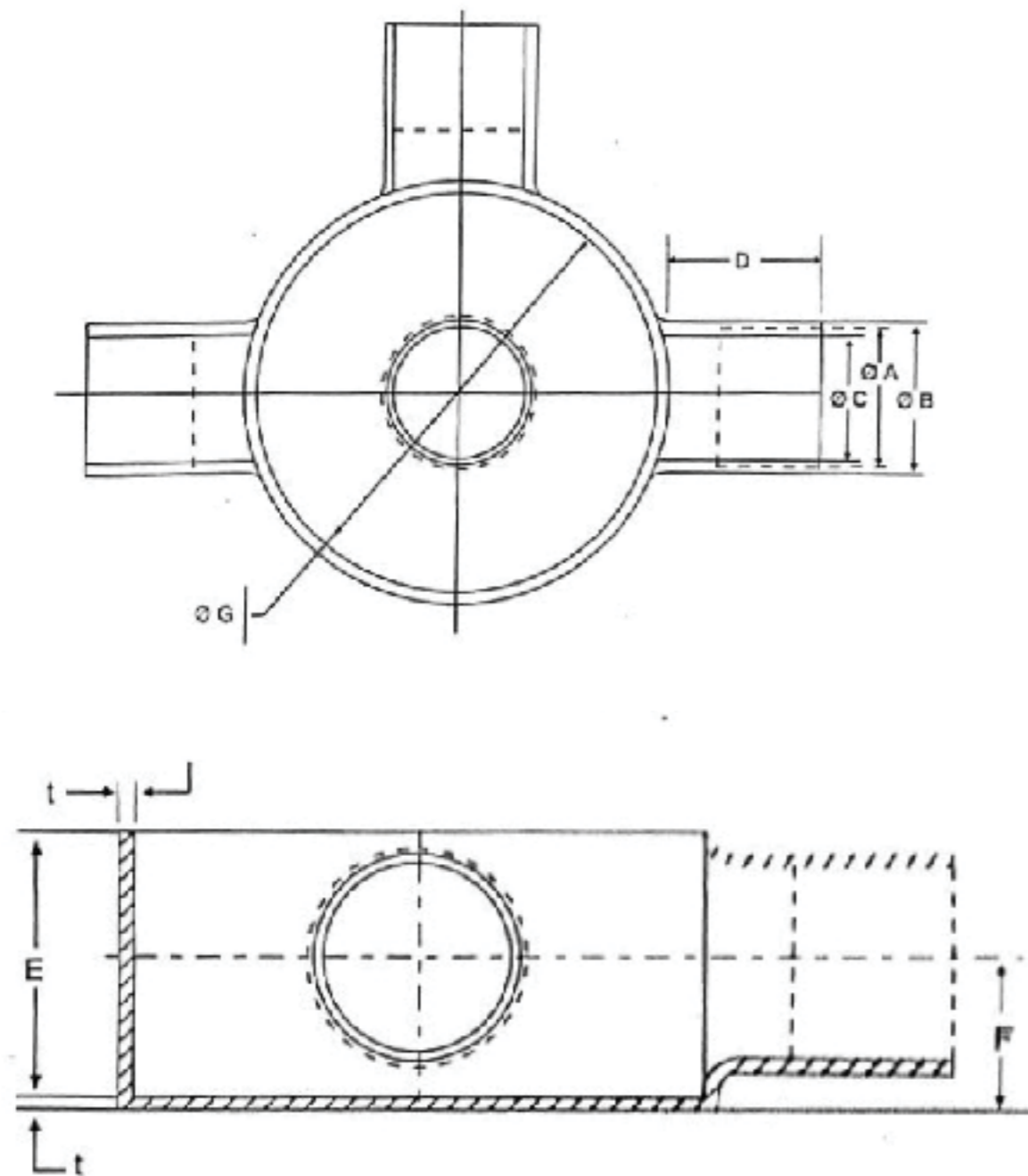
Inside Diameter (min) mm		
Light	Medium	Heavy
13.7	13.0	12.2
17.4	16.9	15.8
22.1	21.4	20.6
28.6	27.8	26.6
35.8	35.4	34.4
45.1	44.3	43.2
57.0	-	-

DIMENSIONS OF CORRUGATED FLEXIBLE CONDUITS

Nominal Diameter	Maximum Outside Diameter	Tolerance on outside Diameter	Minimum Inside Diameter	Minimum Bending Radius
16	16	-0.3	10.7	48
20	20	-0.3	14.1	60
25	25	-0.4	18.3	75
32	32	-0.4	24.3	96
40	40	-0.4	31.2	160
50	50	-0.5	39.6	200



SPOUT TYPE - CIRCULAR JUNCTION BOXES
IS : 3419 - 1988

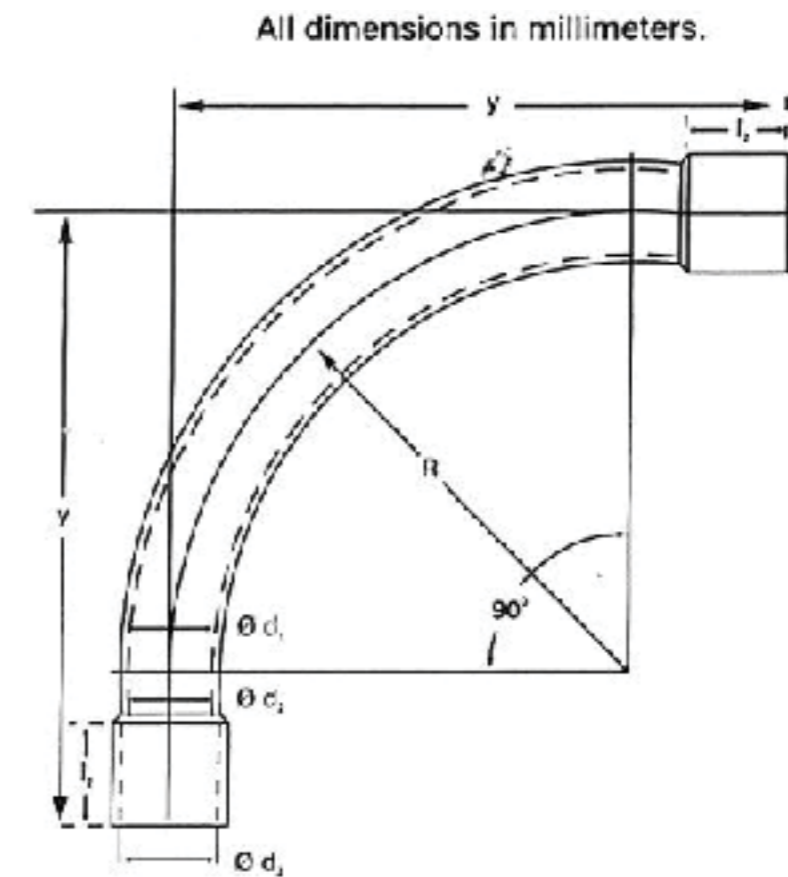


Nominal Outside Diameter of Conduit								
A	B MIN	C	D MIN	E MIN	F MAX	F MIN	G	T MIN
(1)	(2)	(3)	(4)	(5)	(6)	(7)	(8)	(9)
20	23.0	17.00 + 0.25	20.0	25	14.5	13.5	60 + 1.5	1.6
25	29.5	22.75 + 0.25	23.0	28	17.5	16.5	60 + 1.5	1.6

DEEP CIRCULAR JUNCTION BOX

Nominal Outside Diameter of Conduit								
A	B MIN	C	D MIN	E	F MAX	F MIN	G	T MIN
(1)	(2)	(3)	(4)	(5)	(6)	(7)	(8)	(9)
20	23.0	17.00 + 0.25	20.0	65 + 0.2	14.5	13.5	60 + 1.5	1.6
25	29.5	22.75 + 0.25	23.0	65 + 0.2	17.5	16.5	60 + 1.5	1.6
32	35.5	29.5 + 0.5	24.0	65 + 0.2	19.5	18.5	60 + 1.5	1.6

SLIP TYPE COUPLING BENDS IS: 3419-1988



Nominal Size	Outside Diameter of Bend d1	Minimum Inside Diameter of Bend d2	Inside Diameter of Collar d3	R	Y	L
(1)	(2)	(3)	(4)	(5)	(6)	(7)
16	16-0.3	13.1	16.1 + 0.2	55	100	35
20	20-0.3	16.9	20.1 + 0.2	65	115	35
25	25-0.3	21.3	25.1 + 0.3	90	160	35
32	32-0.3	27.9	32.1 + 0.3	125	215	45
40	40-0.3	35.5	40.1 + 0.4	160	260	45
50	50-0.3	44.7	50.1 + 0.4	210	310	55

MINI AND MAXI TRUNKING

Precision Trunking system is designed to give improved appearance and security to surface cables with its wide range of Trunking sizes and fittings offers an efficient and economical solution to cable management. Trunking consists of base and clip on lid which is fitted to the base by pressing it along its front face. The lid can be easily removed by lifting it from the base at one end and peeling it away. The lid has an easy closing mechanism, which is designed to give a securely closed installation, yet is easily accessible for maintenance or modification.

Mounting

Drill oversize holes on base of Trunking to mechanically fix to the desired surface using flat head screws with washers. Fixing center should not be more than 400 mm apart, or more than 150 mm away from the end of the straight run.

Joints

At each joint 3 mm should be left for expansion. A fine toothed tension saw and mitre block should be used to cut the Trunking to provide a neat installation. Internal bends must be mitred to ensure total enclosure of Trunking. External bends should be cut square with the corner and flat angles and tees, cut the side wall of Trunking for the cable entry. None of the cutting is critical as the clip on fittings have a built-in overlap for the lid and sidewalls.

CONDUIT AND TRUNKING CABLE CAPACITIES

Single-core PVC - insulated cables in straight runs of conduit not exceeding 3 meters in length.

For each cable it is intended to use, obtain the appropriate factor from Table 1A.

Add all the cable factors so obtained and compare with the conduit factors given in Table 1 B.

The Conduit size which will satisfactorily accommodate the cables in that size having a factor equal to or exceeding the sum of the cable factors.

Single-core PVC - Insulated cables In straight runs of conduit exceeding 3 meters in length, or in runs of any length incorporating bends or sets.

For each cable it is intended to use, obtain the appropriate factor from Table 1C.

Add all the cable factors so obtained and compare with the conduit factors given in Table 1D, taking into account the length of the run it is intended to use and the number of bends and sets in that run.

The Conduit size which will satisfactorily accommodate the cables is that size having a factor equal to or exceeding the sum of the cable factors.

TABLE 1A
Cable factors for short straight runs

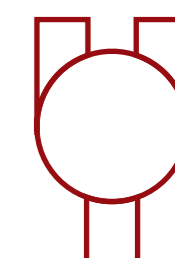
Type of Conductor	Conductor cross sectional area (mm ²)	Factor
Soild	1.0	22
	1.5	27
	2.5	39
	1.5	31
Stranded	2.5	43
	4.0	58
	6.0	88
	10.0	146

TABLE 1B
Conduit factors for short straight runs

Conduit dia (mm)	Factor
16	290
20	460
25	800
32	1400

TABLE 1C
Cable factors for short straight runs or runs incorporative bends

Type of Conductor	Conductor cross sectional area (mm ²)	Factor
Soild or Stranded	1.0	16
	1.5	22
	2.5	30
	4.0	43
	6.0	58
	10.0	105



Precision Plastic Industries Pvt. Ltd.

19/D, Nand Jyot Industrial Estate, Safed Pool, Andheri-Kurla Road,
Andheri (East), Mumbai 400072, India

T +91 22 4041 2000

E electrical@precisionppi.com | plumbing@precisionppi.com

W www.precisionppi.com

Har Building ki
LIFELINE
Precision Pipeline

Brand & Design Partners
A Brand New Day / www.abrandnewday.in